

## GETTING STARTED

### *Who needs this User Guide?*

Customers who will be connecting their network to LOGIX' Internet service.

### *Why this User Guide?*

This guide explains how to make the physical connection from the LOGIX router to your network.

### **STEP 1**

Locate the LOGIX router.  
The router is usually located in your telephone or computer room.



*Note: Pictures are examples; the router LOGIX provides your company may differ slightly.*

### **STEP 2**

Locate the "CONNECT TO LOGIX INTERNET HERE" sticker on the LOGIX router. The arrow points to the Ethernet Port labeled "10/100 BASE T" or "Ethernet."



### **STEP 3**

Plug a CAT5 Ethernet Cable into the Ethernet Port (10/100 BASE T) of the LOGIX router and the other end into your network hub or switch.

**Note:** If connecting a single computer, router, or firewall to the LOGIX router, use a CAT5 Ethernet Crossover Cable between the LOGIX router and your equipment. See "Making Advanced Connections to the LOGIX Router" on Page 6 for additional information.

## STANDARD NETWORK SETTINGS

### *Who needs this User Guide?*

Customers who need instructions on configuring their computers to accept the LOGIX Internet service. The information provided in this guide is for Windows XP and similar operating systems. Consult your Network Administrator or the LOGIX Data Help Desk for assistance with other operating systems.

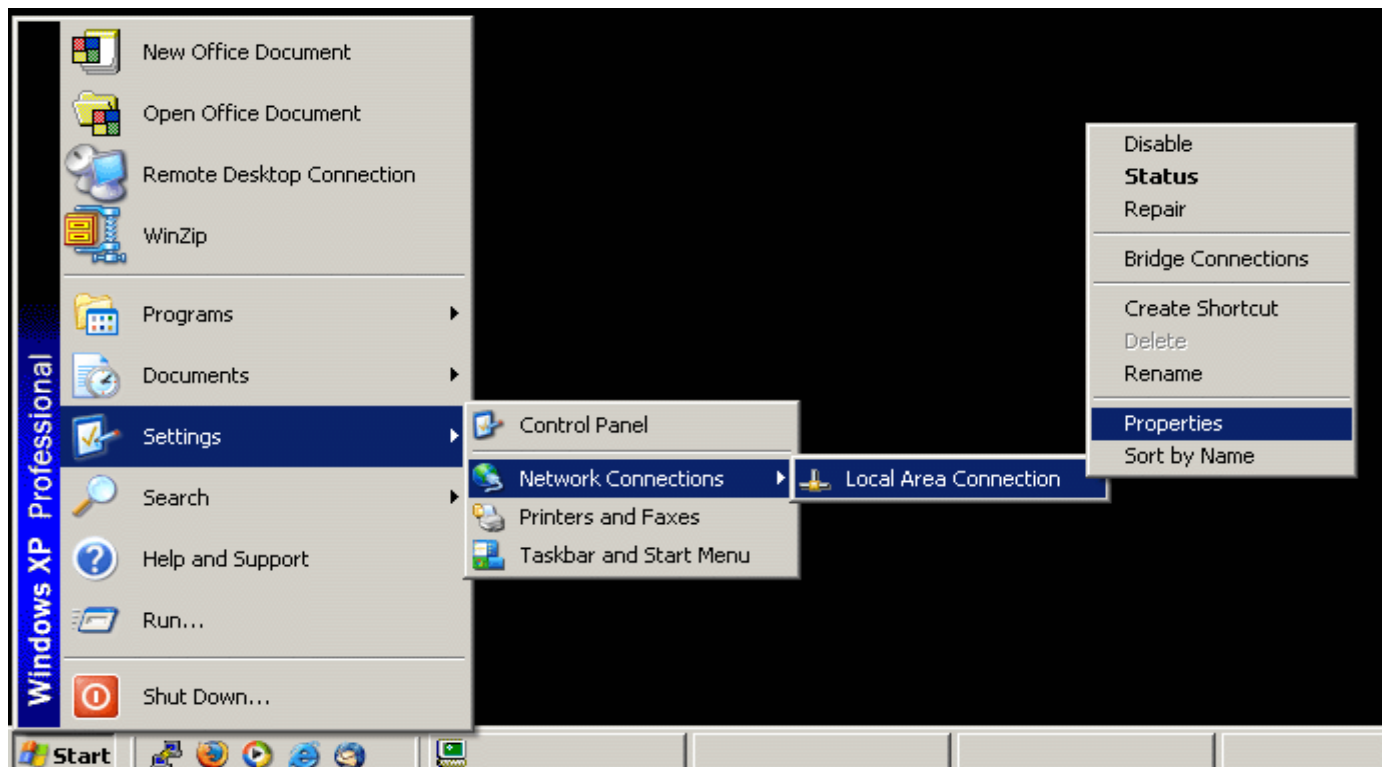
### *Why this User Guide?*

This guide will take you through setting up a standard configuration using DHCP (Dynamic Host Configuration Protocol) on your computer(s). Follow these steps for each computer on your network that will be connecting to the LOGIX Internet.

## STEP 1

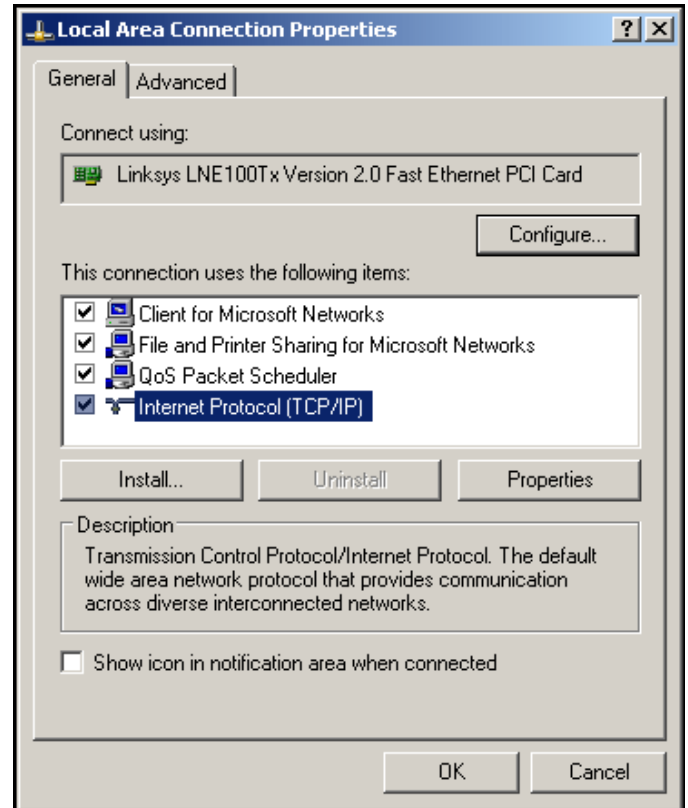
Go to **Start > Settings > Network Connections > Local Area Connection...**

Once on "Local Area Connection", right click and select "Properties."



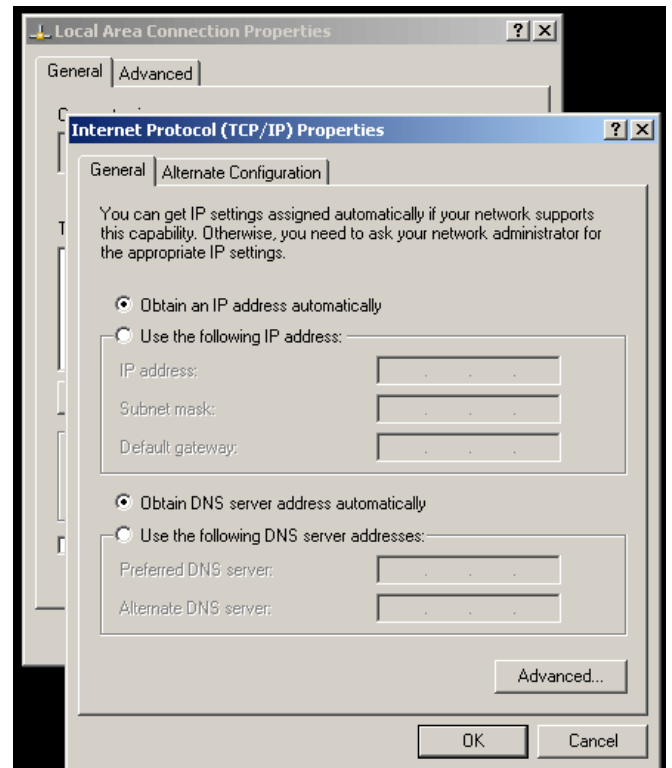
**STEP 2**

Click on "Internet Protocol (TCP/IP)" and then click on "Properties."



**STEP 3**

Within the "Internet Protocol (TCP/IP) Properties" window, select the bullets next to "Obtain an IP address automatically" AND "Obtain DNS server address automatically." Click on the "OK" button and then click on the "OK" button again to apply the settings to the "Local Area Connection Properties." After you click on the "OK" button, the computer may pause for 3-10 seconds while attempting to obtain an IP address.



**STEP 4**

You are now finished. Click on the "Internet Explorer" icon to begin using LOGIX Internet.

## ADVANCED NETWORK SETTINGS

This section provides the advanced network information for customers who will be connecting a firewall, router, or using static IP's on their network.

### INTERNET CONNECTION DETAIL

LOGIX provided your company with a customized Internet Connection Detail form during the installation process. This document contains your:

- Account information
- IP information
- Default LAN settings

For a current copy of your Internet Connection Detail please contact the LOGIX Data Help Desk at 1-877-673-1868.

Below is a sample of an Internet Connection Detail form.

### Internet Connection Detail

**Customer Information:**

Customer Name :	ELITE CUSTOM BUILDERS	LOGX Acct # :	43631183
Contact Name :	Kelly Davis	Order #:	122222
Telephone :	713-794-8500		
Location Address :	2950 N Loop West Suite 1200		
City, State Zip :	Houston TX 77092		

**Customer IP Information:**

Public IP Addresses	DNS Resolvers
Network IP: 316.322.455.90	gordon.logixcom.net 66.196.212.10 Primary
Default Gateway IP: 316.322.455.91	faith.logixcom.net 216.201.128.10 Secondary
Mask : 255.255.255.248	meredith.logixcom.net 66.196.216.10 Third Choice
Usable IPs : 316.322.455.92 to 316.322.455.96	

Additional Public IP Addresses (if requested)	Additional Public IP Addresses (if requested)
Network IP: <span style="background-color: yellow; display: inline-block; width: 100px; height: 1em;"></span>	Network IP: <span style="background-color: yellow; display: inline-block; width: 100px; height: 1em;"></span>
Default Gateway IP: <span style="background-color: yellow; display: inline-block; width: 100px; height: 1em;"></span>	Default Gateway IP: <span style="background-color: yellow; display: inline-block; width: 100px; height: 1em;"></span>
Mask : <span style="background-color: yellow; display: inline-block; width: 100px; height: 1em;"></span>	Mask : <span style="background-color: yellow; display: inline-block; width: 100px; height: 1em;"></span>
Usable IPs : <span style="background-color: yellow; display: inline-block; width: 100px; height: 1em;"></span> to <span style="background-color: yellow; display: inline-block; width: 100px; height: 1em;"></span>	Usable IPs : <span style="background-color: yellow; display: inline-block; width: 100px; height: 1em;"></span> to <span style="background-color: yellow; display: inline-block; width: 100px; height: 1em;"></span>

**LAN Settings:**

Default Local Area Network Settings*	Notes:
LAN IP Network: 172.17.2.0	
Ethernet / Gateway IP : 172.17.2.1	
Mask : 255.255.255.0	
Usable IP Addresses : 172.17.2.2 to 172.17.2.254	
DHCP Excluded Range: 172.17.2.1 to 172.17.2.20	

\* Can be changed upon customer's request

**Note:** By default, LOGIX Communications deploys equipment with NAT (Network Address Translation) and DHCP (Dynamic Host Configuration Protocol) activated. To deactivate these settings contact the LOGIX Data Help Desk at 1-877-673-1868.

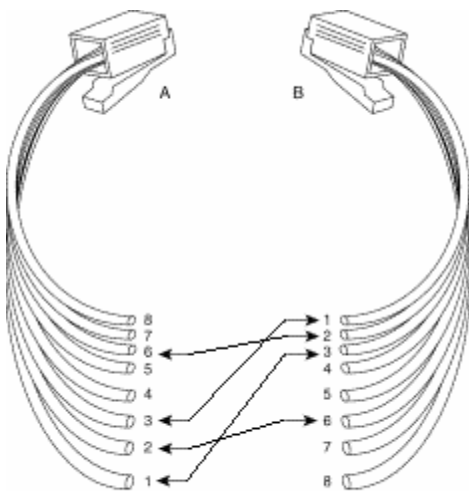
## DNS RESOLVERS

DNS Resolvers take a Domain Name and determine its corresponding IP address. Below are the location-specific DNS Resolver IP's for your router, firewall, or computers using static IP addresses.

Location	Primary	Secondary	Third (if needed)
Austin	66.196.216.10	66.196.212.10	216.201.128.10
Dallas/Ft. Worth	66.196.212.10	216.201.128.10	66.196.216.10
Houston	66.196.216.10	66.196.212.10	216.201.128.10
Oklahoma	216.201.128.10	66.196.212.10	66.196.216.10
San Antonio	66.196.216.10	66.196.212.10	216.201.128.10
Tulsa	216.201.128.10	66.196.212.10	66.196.216.10

## MAKING ADVANCED CONNECTIONS TO THE LOGIX ROUTER

If connecting a single computer, router, or firewall to the LOGIX router, use a CAT5 Ethernet Crossover Cable between the LOGIX router and your equipment. The CAT5 crossover cable has the transmit and receive pairs reversed. See the diagram below.



- Pin 1 on connector A should be wired to pin 3 on connector B.
- Pin 2 on connector A should be wired to pin 6 on connector B.
- Pin 3 on connector A should be wired to pin 1 on connector B.
- Pin 6 on connector A should be wired to pin 2 on connector B.
- Pins 4, 5, 7, and 8 are not used.